

Rascunho 4

3x2

Louise Woolley

♩ = 195

Am7

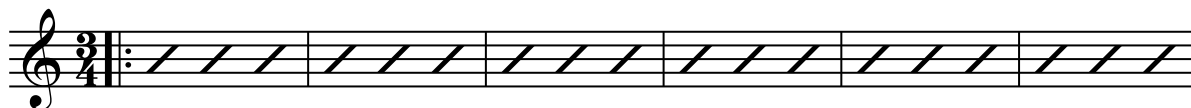
A \flat 7M(#5)

F7M(#11)

C/E

C/B

C7M



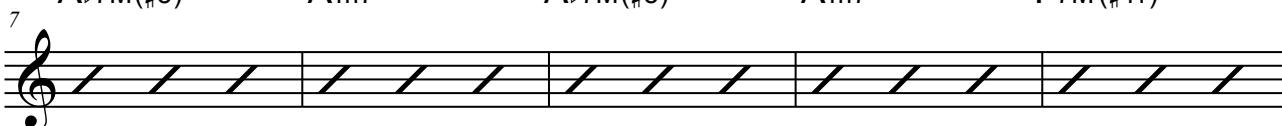
A \flat 7M(#5)

Am7

A \flat 7M(#5)

Am7

F7M(#11)



C/E

C/B

C7M

A \flat 7M



Am7

A \flat 7M(#5)

Am7

A \flat 7M(#5)

Am7



A \flat 7M(#5)

Am7

A \flat 7M(#5)

Am7

A \flat 7M(#5)



Am7

A \flat 7M(#5)

Am7

A \flat 7M(#5)

Am7



A \flat 7M(#5)

Dm7

F7M(#11)

A \flat 7M(#5)



Dm7

F7M(#11)

A \flat 7M(#5)




Rascunho 4

Impro

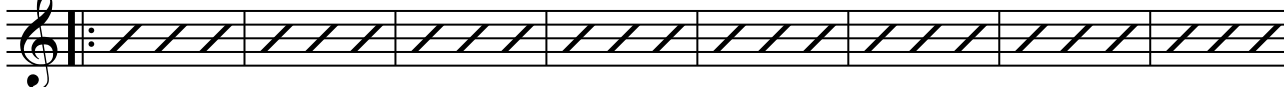
41 Am7 Ab7M(#5) F7M(#11) C/E C/B C7M Ab7M(#5) Am7




49 Ab7M(#5) Am7 F7M(#11) C/E C/B C7M Ab7M(#5)




57 Gm7 Gb7M(#5) Eb7M(#11) Bb/D Bb/A Bb7M Gb7M(#5) Gm7



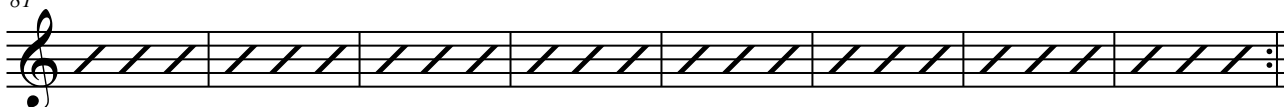
65 Gb7M(#5) Gm7 Eb7M(#11) Bb/D Bb/A Bb7M Gb7M(#5)



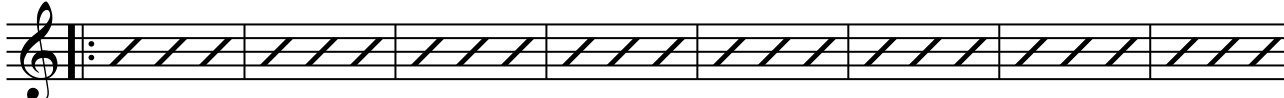
73 Fm7 E7M(#5) Db7M(#11) Ab/C Ab/G Ab7M E7M(#5) Fm7



81 E7M(#5) Fm7 Db7M(#11) Ab/C Ab/G Ab7M E7M(#5)




89 Am7 Ab7M(#5) F7M(#11) C/E C/B C7M Ab7M(#5) Am7



D.S. sem repetição al Coda

97 Ab7M(#5) Am7 F7M(#11) C/E C/B C7M Ab7M(#5)



Rascunho 4

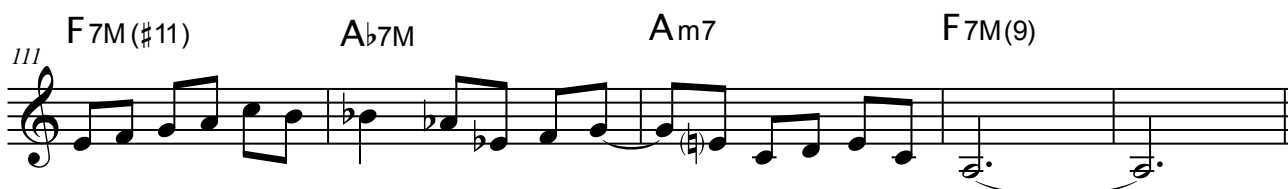
105 Am7 Ab7M(#5) F7M(#11) C/E



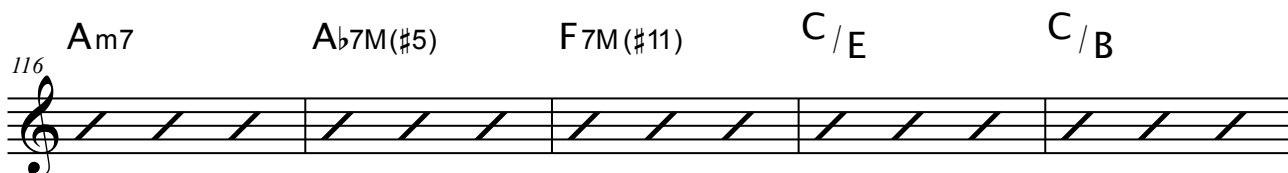
108 F7M(#11) C/E F7M(#11) C/E F7M(#11)



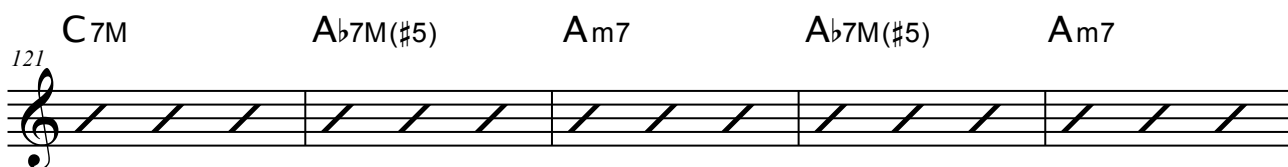
111 F7M(#11) Ab7M Am7 F7M(9)



116 Am7 Ab7M(#5) F7M(#11) C/E C/B



121 C7M Ab7M(#5) Am7 Ab7M(#5) Am7



126 F7M(#11) C/E C/B C7M Ab7M(#5) Ab7M(#5)

