

Pra Luiza

Bossa Nova

Lis de Carvalho

♩ = 60

E7M

E7M(#5)

F#₄⁷(13)

F#7(^{#11}₁₃)



5 G#₄⁷(13)

G#7(^{#11}₁₃)

G#₄⁷(13)

G#(frig)



9 G#m7(9)

G#m(7M)

C#₄⁷(9)

F#₄⁷(9)



13 A7(^{#11}₁₃)

D₄⁷(9)

Em7(9)

F#m7(11)



17 B7(^{#11}₁₃)

Am7(9)

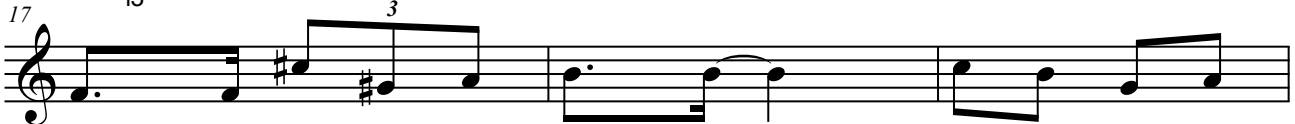
G#m7

Gsus4

F#

Csus4

Dsus4



20 E7M(9)

C7M(9)

D#7M(9)

B7M(9)

F7(^{b9}₁₃)



23 Bbm7(9)

Bbm(7M)

Ebsus4



26 G₄⁷(9)

B7(^{#11}₁₃)

E₄⁷(9)

F#m7(11)




Pra Luiza

30 $G\#m7(11)$ $G\#m(7^M_9)$ $G\#m7(11)$

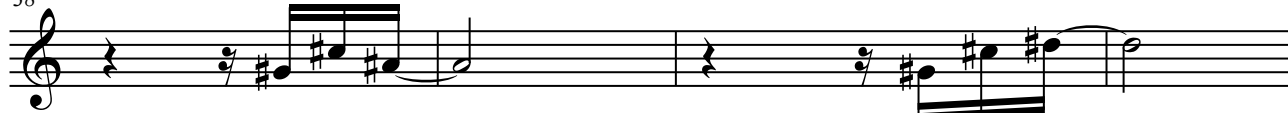


D.S. al Coda

33 $G\#m(7^M_9)$ $Am7(11)$ $Am(7^M_9)$ $Am7(11)$ $Am(7^M_9)$ Coda



38 $E7^M$ $E7^M(\#5)$ $F\#7_4(13)$ $F\#7(\#11_{13})$



42 $G\#7_4(13)$ $G\#7(\#11_{13})$ $G\#7_4(13)$ $G\#(frig)$ $G\#(frig)$

